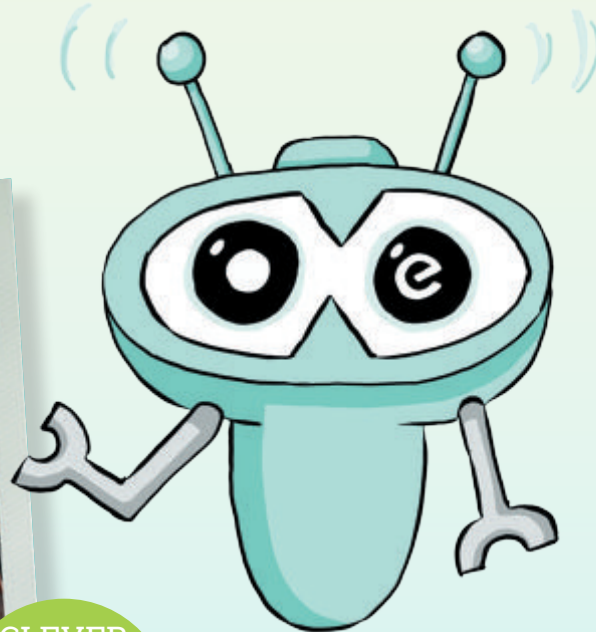


Spectacular **SPACES**



CLEVER
WAYS TO
IMPROVE
SPACES
INSIDE



marqetspace®

PROFESSIONAL PRINT

Buyer's Club



INSTANT ONLINE PRICES

Sometimes too much choice is daunting. That's why we've featured just a trio of options on each page. But the truth is, we have **thousands** of sizes, styles and finishes to choose from.

So if you're looking for something you don't see – just ask!

To get a price, simply type what you're looking for into the search box at **marqetspace.co.uk**.

Or upload your files by clicking 'Start your order'.



WELCOME

Ban the beige. Say 'so long' to the sterile. Lose the lean.

It's time to make your workspace more productive. Create an engaging environment for customers and your team. New research shows they work quicker in an enriched environment. They're happier and have fewer health complaints.

We've invested in cutting-edge technology and this entire décor range is made in our own factories. You'll be surprised at just how much of your space can be branded.

It's never been easier to create Spectacular Spaces.

LET'S GO!



WALLS

6-15

VINYL
WALLPAPER
ACRYLIC DISPLAYS



PARTITIONS

16-21

ROOM DIVIDERS
CURTAINS



BOOTHS

22-33

MEETING ROOMS
WEBEX ROOMS
CHANGING ROOMS



CEILINGS

34-35

SUSPENDED
CEILING TILES



FLOORS

36-39

LOGO MATS
FLOOR GRAPHICS



WINDOWS

40-45

ETCHED VINYL
CUT-OUT LOGO DECALS
WINDOW PANELS



TRY DISPLAYS IN YOUR ROOM

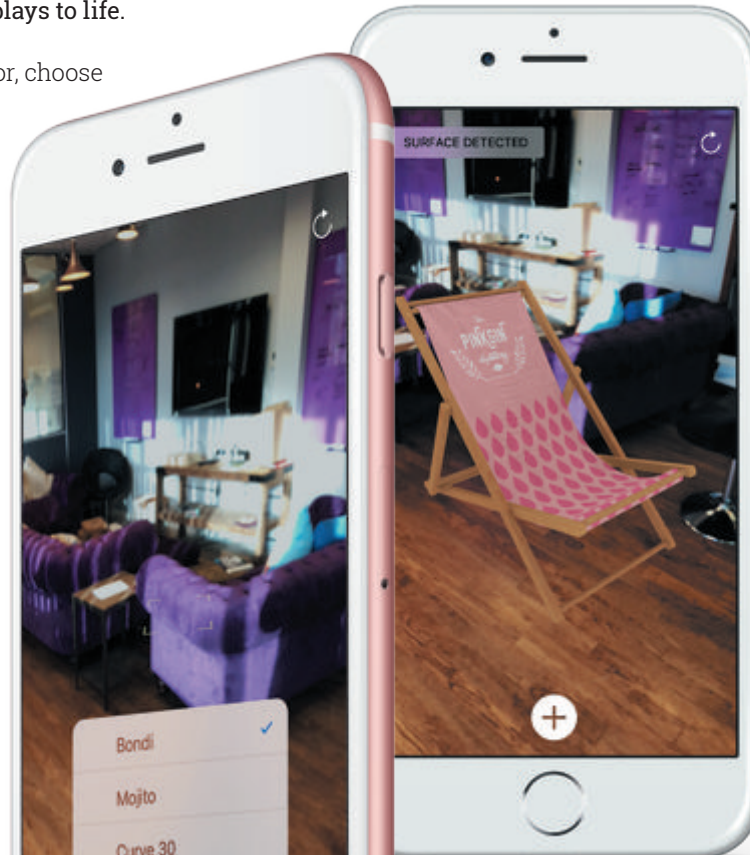
IN GLORIOUS AUGMENTED REALITY

BeholdAR, our augmented reality app for iPad and iPhone brings fabric displays to life.

Point your camera at your floor, choose a display model and place it into your room. Use your fingers to position it, then walk round the display to see how it would fit in your space. You won't believe that it's not actually there.

BeholdAR is available free from The App Store. You just need iOS 11.0 or later, an iPhone 6 or newer or recent iPad (see right). Selected display ranges only, more coming soon.

www.beholdar.co.uk



BeholdAR



Download on the
App Store

COMPATIBILITY

Requires iOS 11.0 or later. Compatible with iPhone 6s, iPhone 6s Plus, iPhone SE, iPhone 7, iPhone 7 Plus, iPhone 8, iPhone 8 Plus, iPhone X, 12.9-inch iPad Pro, 9.7-inch iPad Pro, iPad (5th generation), 12.9-inch iPad Pro (2nd generation) and 10.5-inch iPad Pro.

WALLS



BRAND YOUR WALLS

Walls are your biggest canvas. And big spaces are your opportunity to make a big impact.

Use walls to reassure people. Or to excite. Share your customer's story, their journey and their brand. With visitors, with clients and their team.

Engaging spaces make financial sense. Motivate and retain teams. Encourage brand loyalty.





VINYL, VINYL ON THE WALL

Cover entire walls with vinyl self-adhesive graphics.

Want to live underwater? Done. Feel like you're in a forest? Go for it. Roam with the buffalos? Bet they stink. The options are limitless. One thing's for certain, the space you design will be inspirational.

Vinyl has very high tack, for permanent installation. Printed with light-stable inks, it's intended for long term use and we matt laminate it to make it wipe-clean.

Installation is best done by a professional decorator. Ask about our 'brick vinyl' which can be fitted straight onto breeze block walls.

IGWVI

WE'RE TRANSFORMING THE FUTURE

2011 RAINY TO THE FUTURE

UNSUNG HERO
AWARD

THE ALBERT
KENNEDY
TRUST

THE SUNDAY TIMES
100
BEST COMPANIES
TO WORK FOR
2010

THE NEW
CHILDREN'S
HOSPITAL
SUPPORT

Y&M
prize for
children



Business for neighbours

COMMUNITY
SPIRIT
AWARDS



SAY IT WITH VINYL LETTERS



You don't have to cover entire walls.

With our cut-out vinyl, design words, logos and shapes and then stick them to the walls. The wall will show through the cut-out bits.

To apply, peel off the backing. The self-adhesive pieces can be stuck to most flat walls, either inside or outside. Don't stop at walls – stick these on doors, lifts and cabinets too.

IGWVIS





WALLPAPER

Our wallpaper has a smooth matt premium finish, like, well, premium wallpaper.

It's easy to order a bespoke design. Just measure the whole area and supply as one design. We slice your design into strips, around double the width of a normal roll of wallpaper.

Anyone who's good at decorating can put it up. Paste the wall and hang it like you would at home. We recommend the optional 5mm overlap to make it easier to align each drop with the next.

LFPWPPWX



Mission

To challenge the educational status quo and positively change lives through our passion for education and the professions.

Internal Values

- Student / Client Centricity
- Ownership / Accountability
- Team orientation

Guiding Principles

-  Professionals teaching professionals
-  Close to employees
-  Outstanding educational experience
-  Innovation
-  Ethical behaviour

Where we are going

To be the **global leader** of education and training **dedicated to the professions**



Our
Future

2016/2020
Empire

STAND OFF THE WALL



If you're too shy for full frontal wall covering, these acrylic displays are an elegant alternative. Choose between regular 3mm or luxury 5mm thick acrylic.

We print onto the face of white acrylic. Or smarter, we can print onto the reverse of the acrylic in UV stable inks. Then we print a white layer, so your image is visible.

Stick them directly to the wall or choose optional neat satin chrome stand-off fixings – just drill holes in the wall, screw in and you're ready to go. Perfect for mission statements, inspirational messages and navigational signage too.

PARTITIONS



MAKE A PLAN TO BANISH OPEN PLAN

Open plan is sooo last decade. Studies have shown that breaking up spaces can improve productivity and reduce stress. But that doesn't mean you need to call the builders in.

Fabric displays make excellent room dividers. Inside each is a lightweight aluminium frame. Clip it together and then stretch over the fabric graphic.

Each side can be printed with a different design. Theme two different areas with a single display by using both sides.

Straight and Curve displays are 2.3m tall. In open areas, they break sightlines and make spaces feel more intimate, since you can't peer over them.

As an extra bonus, fabric has natural acoustic properties and helps to reduce clatter and clanging, particularly in areas with wooden or hard floors.

And one more thing. Going to an event? Include your logo on the design and take it with you as a backdrop.



F



A



E



A

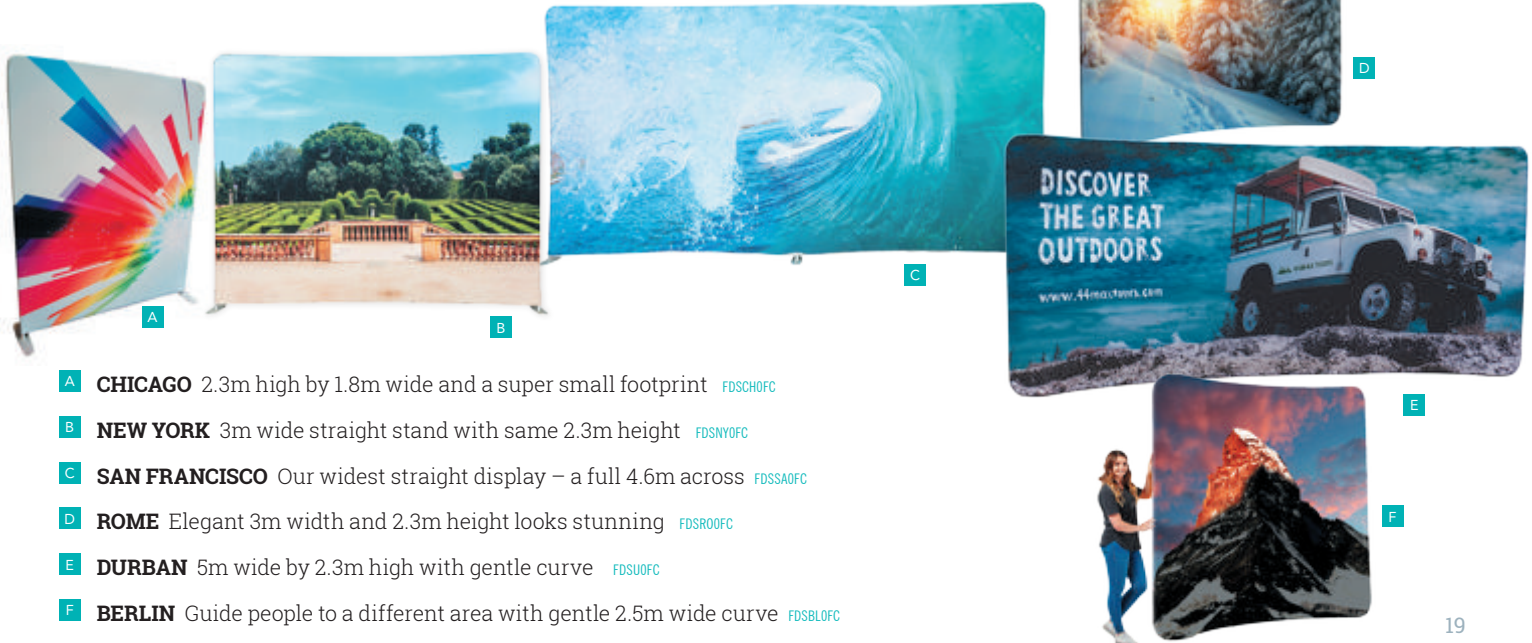


— Eyecatching
geometric pattern
on this Stage 46
divides the space

DIVIDE AND CONQUER YOUR ROOM

Our Straight and Curved range of fabric displays make great room dividers. Prices shown are for single sided displays with unprinted white reverse – also available double sided.

All prices include delivery.



A CHICAGO 2.3m high by 1.8m wide and a super small footprint [FDSCH0FC](#)

B NEW YORK 3m wide straight stand with same 2.3m height [FDSNY0FC](#)

C SAN FRANCISCO Our widest straight display – a full 4.6m across [FDSSA0FC](#)

D ROME Elegant 3m width and 2.3m height looks stunning [FDSR00FC](#)

E DURBAN 5m wide by 2.3m high with gentle curve [FDSU0FC](#)

F BERLIN Guide people to a different area with gentle 2.5m wide curve [FDSBLOFC](#)

Give glory to an
ugly hole with
lightweight fabric
drapes





TO HANG WITH THIS

You don't even need a frame to create a partition. Use a curtain rail and suspend lengths of fabric to make translucent curtains.

Flag material is really low cost and has a nice see-through effect. Available in virtually any length in widths of up to 2.9m, perfect for period properties or big windows. Create some privacy from the outside world and use it to hide ugly windows.

Available unfinished as standard, or optionally hemmed with eyelets to hang from curtain hooks.

FDASFLAR



BOOTHS





These booths are dual purpose. They make cosy meeting areas and double-up as backdrops for exhibitions.

Inside each is an aluminium skeleton. It clips together in under ten minutes. Then slide the enormous fabric skin over and zip up. The whole thing collapses into a carry up. The whole thing collapses into a carry bag which fits easily in your car boot.

Use both sides of the booth. Let your imagination go wild. They look best when you treat the outside as the external view and then something different inside. Think castle wall, space ship or bunker on the outside. Then make the interior feel like you've stepped into a cosy space.

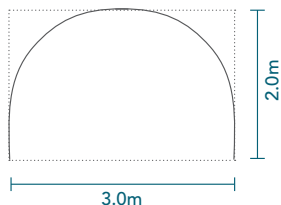
There's serious purpose to this frivolity. It encourages creative thinking and sparks imagination.

Some of our favourites are on pages 32-33 but we really can print anything you can think of. Even that. Saucy you!

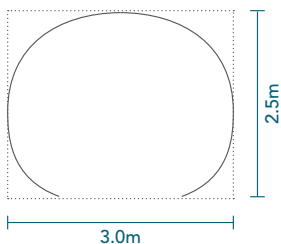




B




A CAPE TOWN Our most popular booth which fits in a 3m x 2m footprint and has a wide entrance. Use both sides to make it feel like you've walked right inside a cool environment [FDSCAPFC](#)



B PRETORIA 3m wide by 2.5m deep, curves right round on both sides to form hi-backed shape. Accentuate with furniture in the same style – it's amazing what you can find second hand [FDSPREFC](#)

**C U JIMMY?
YES, I C U!**



It's amazing how great unloved furniture from home can look when it's part of a theatrical-looking set



A

NOT A SLIPPERY SLOPE

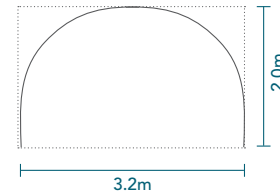
- A BEIJING** Has an interesting sloped shape which rises from left 1.25m to be 2.3m high on the right

FDSBEIFC

- B** Pop in a couple of **BOSTON** cubes and make an informal meeting space
— see page 49



B





BE A STORYTELLER



WELLINGTON This cosy booth is 1.8m high at the back with a compact 2.0 x 2.4m footprint. Pop beanbags on the floor and make a storytelling or briefing space. Both the inside and outside can be customised entirely in your brand.

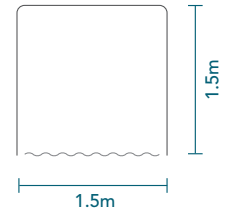




HIDE AWAY AND GET STUFF DONE

These VATICAN booths are multi-purpose.

Use them as private webex booths, intimate meeting rooms, polling stations or changing cubicles.



Closed on three sides, with a sliding curtain on the front. These look best if you design the curtain to accent the main design, rather than trying to make a continuous graphic.

Like all our booths, inside is a lightweight frame. Clip together, stretch on the fabric graphic, attach the curtain rail and it's up.

FDSVATFC

PICK A THEME, ANY THEME

Folk see these booths. They fall in love with them. And they ask us “what would you do if you were me?”

Well, we’ve designed loads of them. Here are a few ideas to get your juices flowing. Anything you see here can be used as it is, or we can discretely weave your logo into the design.

Each booth has an inside and outside – make the most of both sides. Not see something which suits your brand? Ask us – we’re stacked with ideas.



A BALLOONS (for Pretoria booth)



B TITANIC (for Beijing booth)



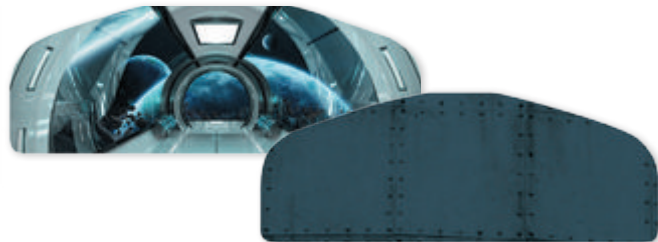
C WILD WEST (for Pretoria booth)



D BEACH TRUCK (for Cape Town booth)



E TROPICAL (for Wellington booth)



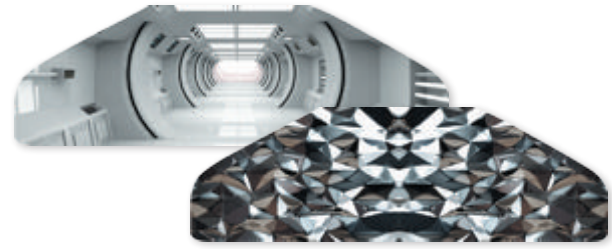
F STAR BRIDGE (for Cape Town booth)



G LOG CABIN (for Beijing booth)



H ORANGERY (for Cape Town booth)



I SPACESHIP (for Wellington booth)

CEILINGS





RAISE THE ROOF

Why live with boring ceiling tiles? Now it's possible to brand your roof. We print directly onto standard suspended ceiling tiles.

Each tile is 595x595mm which fits into a regular 600x600mm grid. Measure your tiles before you start, to make sure you've not got some weird size.

Either print multiple copies of the same design, or go full hog and have every tile with a different design. Tiles can be cut to size by a grown-up who's good at DIY.

Do your full roof or replace those individual stained tiles with a scattering of your logo.

IGCEIL

FLOORS

FASCINATING FACTS
Your height is almost the same as
the length of your arms
stretched out from your sides
from fingertip
to fingertip



STEP ON IT, STEP IT UP

You've got the picture by now. Just about any surface can be branded.

Why use floor graphics? They're neat for navigation. Guide people in the right direction.

Simple rectangles are the lowest price, but it really doesn't cost much more to make a simple shape.



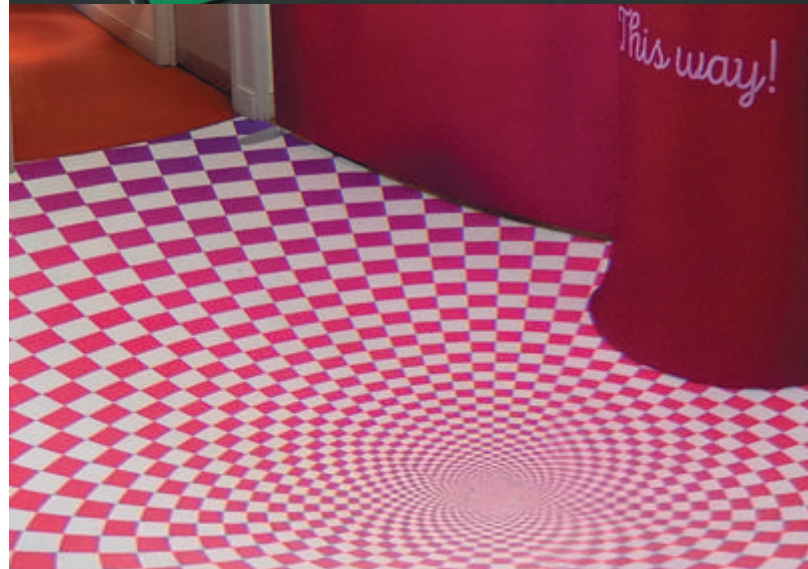
PUT YOUR PEDAL TO THE VINYL

Our self-adhesive floor vinyl is suitable for hard floors or carpet. Just peel and apply vinyl directly to the surface.

It depends how much traffic your space has, but the graphic should last for a few months with regular footfall. To increase longevity, we add a non-slip laminate to protect the surface.

Rectangles [IGFVI](#)

Shaped graphics [IGFVIS](#)



WIPE YOUR FEET, ROY!

Customise your entrance. Print your logo or welcome message on a floor Logo Mat.

Immediately put people in the right frame of mind by printing an unexpected message. We particularly like “nice shoes” and “that colour really suits you”.

Choose from 15 standard sizes, starting at 60cm x 85cm right up to 2 x 3m. They're guaranteed for 5 years and are fully washable. Mat is 100% nylon for high absorption. Rubber backing suits both carpets and hard floors. They're finished with a premium rubber Nitrole border to maximise durability.

IGLFM01



WINDOWS

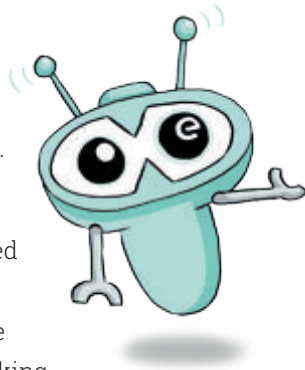
DECAL THE WINDOWS WITH WORDS OF GLORY

It's easy to brand glass doors, interior partitions and windows. There's a few ways of doing it.

Letter and logo decals are printed in full colour in reverse, so that they can be read from the inside of a window, with full white backing or spot/selective white backing. They can be square cut or shaped.

Perfect for any design including logos, telephone numbers and words.

IGWGFS







LIGHT? WHO NEEDS LIGHT? BLOCK IT OUT!

Or you can completely cover some or all of your windows with self-adhesive window panels. Maybe you want to hide folk watching your refit. Or if you've got full-length windows, you could block out the bottom half to provide a little modesty.

They'll last for 2-4 years outside.

Available in standard sizes

IGWGF

WHO *will you be*

MEETING

IN *our* SPECIAL PLACE

THIS DAY?

ETCH ME, FROST ME, ANY WAY YOU WANT ME

Frosted or etched windows are delightfully elegant. They look like windows have been sandblasted. Particularly pleasant and understated for period properties.

Like decals, choose the areas you want to be cut-out. Either create a solid block, with cut-out words and logos. Or just design individual words and letters which will look like they've been etched into the glass.

Supplied pre-cut on backing paper which fixes to the inside of the glass.

IGWGE





A man and a woman, both wearing red hats, stand behind two bar stools designed to look like ice cream cones. The woman, on the left, is wearing a black top and has her hand on the orange cone-shaped stool. The man, on the right, is wearing a light blue shirt and black pants, and is leaning over a red cone-shaped stool. Both stools have a waffle cone pattern and a large, colorful ice cream scoop on top. The background features a blue sky and a white food truck. The word "FURNITURE" is written in large, white, bold letters across the center of the image.

FURNITURE

TABLES TO COMPLETE THE LOOK



A



B



C



D



E



F

A RIO TABLE Pop up cocktail table [FDSRIOFC](#)

B VENICE Flip cocktail table [FDSVENFC](#)

C MEXICO CITY Fabric table [FDSMEXFC](#)

D 5FT FITTED TABLECLOTH for trestle table [FDTCAR5](#)

E 6FT FLOWING TABLECLOTH custom sizes also available [FDTGUG](#)

F 6FT FITTED TABLECLOTH for trestle table [FDTCAR6](#)

G TABLE RUNNER lay vertically across a table [FDTARJ](#)



G



A

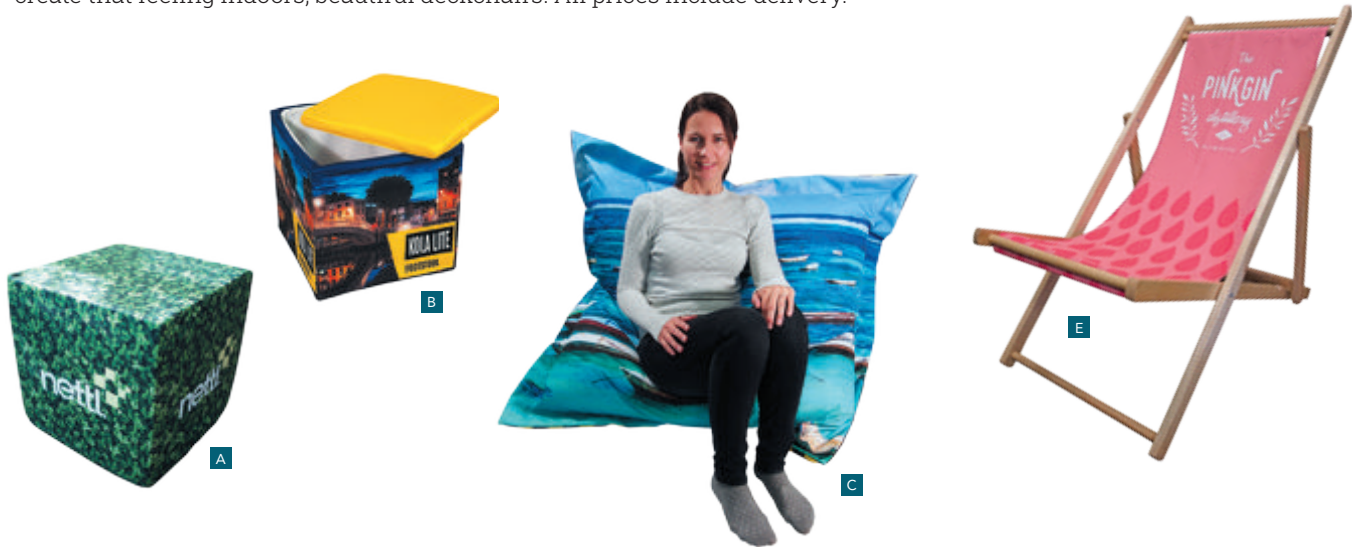
F

E

C

SIT DOWN, OH SIT DOWN

Who knew there were so many ways to brand your bum? Informal bean bags and cubes, to bar stools and director's chairs. Or for lazy summer days and to create that feeling indoors, beautiful deckchairs. All prices include delivery.



- A BOSTON** A comfortable high density foam cube for informal meetings [FDSBOSFC](#)
- B MEXICO CITY** Low cost, personalised stools are great for creating an audience area at your event [FDSOU1FC](#)
- C BALI BEANBAG** Create comfy seating chill-out areas with these massive beanbag [FDSBALFC](#)
- D WAIKIKI** Branded deckchairs are ace for indoor and outdoor use. Use to create relaxing chill-out areas [FDSWA1FC](#)

3D FABRIC DISPLAY PROOFS

Sometimes it's tricky to imagine just how your artwork will look on a fabric display.

We've developed a cool new tool to help. See your artwork as a 3D model. Spin it round, zoom in, flip it and get a better idea of how it will look.

Much of our fabric furniture and display range is available right now and we're working on the rest.





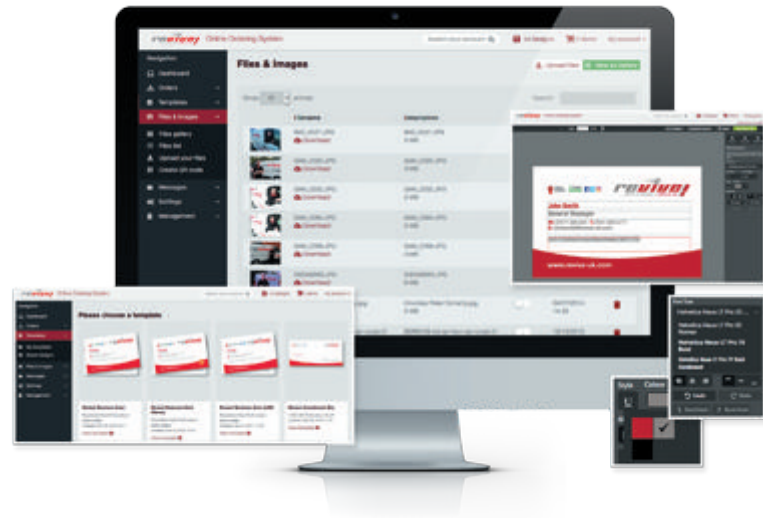
Private web-to-print shops for your finest clients.

Your clients want self-service tools to organise their branded marketing and order print online.

Now it's easy to set up w3shop Private Client sites for their brand. Quickly turn their marketing into online editable templates. Take orders while you sleep.

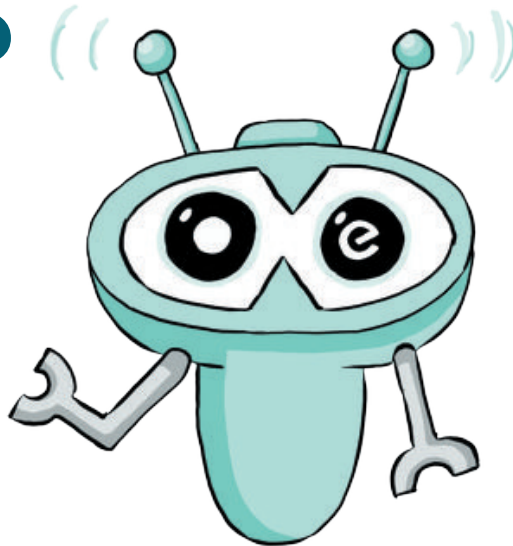
Make life easier for your clients.
And turn transactions into long-lasting, sticky relationships.

Get started at w3shop.com/private



 **RISK FREE GUARANTEE**

Spectacular SPACES



 DELIVERY INCLUDED*

Order online today at
www.marqetspace.com,
call free 0800 612 6240
or email hello@marqetspace.com

The small print:

The small print: Use the codes in this booklet (eg. FDSVATFC) to search for prices online.

*Prices shown online include delivery to one UK mainland address.

Heavy or offshore deliveries may cost more.

See full range and product specifications online.



marqetspace®

PROFESSIONAL PRINT

Buyer's Club